

KATO

KATO WORKS CO.,LTD.

HEAD OFFICE: No. 9-37, 1-chome, Higashi-ohi, Shinagawa-ku,
Tokyo, Japan
Tokyo 471-8111
Tel:

FOREIGN DEPARTMENT: The 17th Mori Bldg., Shiba Nishikubo
Sakuragawa-cho 2, Minato-ku, Tokyo, Japan
Tokyo 591-5111
Tel: CRANEKATO TOKYO
Cable Address: 0 222-4519 (CRKATO J)
Telex:

7303 3000(T) Printed in Japan

KATO

FULLY HYDRAULIC TRUCK CRANE

MODEL

NK-400



KATO WORKS CO.,LTD.

TOKYO

KATO NK-400

FULLY-HYDRAULIC FULL-SLEWING TRUCK CRANE

SINGLE LEVER CONTROL 4 SECTION "FULL POWER" BOOM:

Each section of boom has an independent hydraulic cylinder, permitting the boom length quite free on extension or retraction within the range from minimum 11 m to maximum 35 m in length. Controlled by only one lever.

NEW CONTROLLED FREE FALL "FREOMATIC" WINCHES ENSURE SPEEDY OPERATION:

Tandem-drive two speed main and auxiliary winches are driven by high-torque hydraulic motor, having automatic brakes and clutches. This mechanism enables the safe operation of "Free Fall" or "Power Lowering" of the hook.

"GLIDE-MASTER" PLANETARY SLEWING:

"Glide-Master" planetary slewing system enables smooth, precise slewing operation, and in addition a hydrostatic controlled disk brake is provided.

FULL VISION SUPERSTRUCTURE CAB:

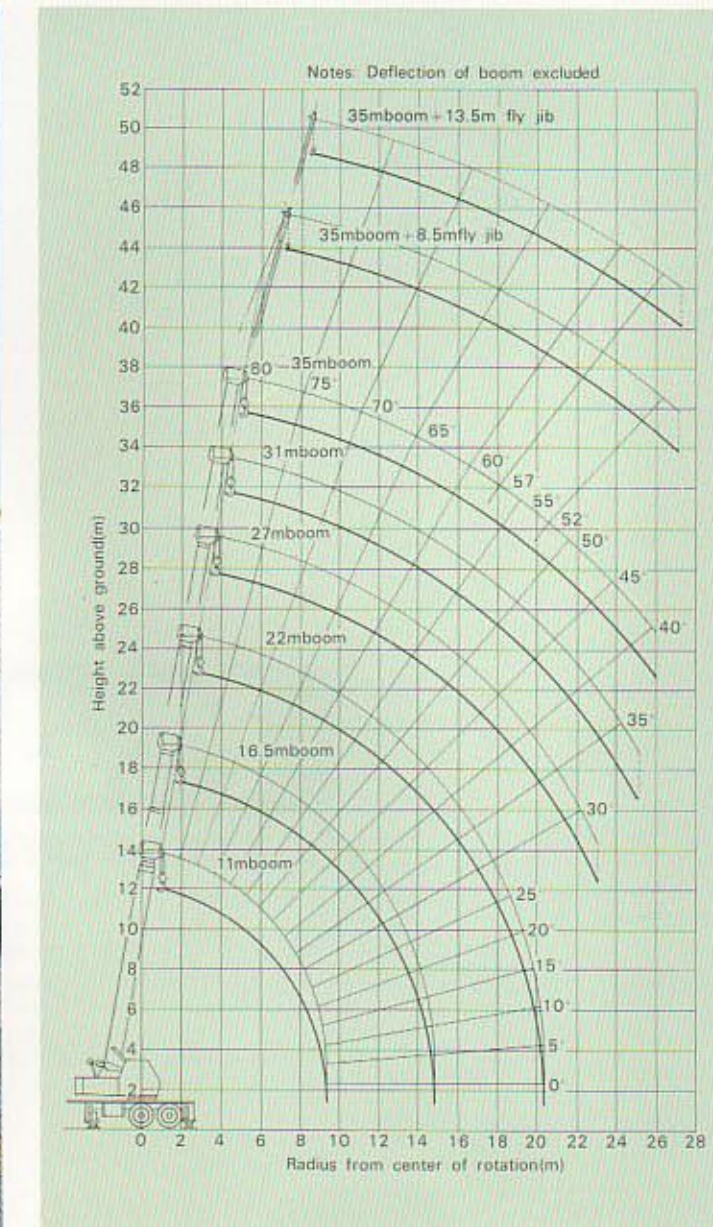
Provided with safety glass in all windows and all necessary control levers, gauges, instruments, etc. are well arranged at convenient location for the operator. A comfortable reclining seat gives no fatigue to the operator.

AUTOMATIC SAFETY CUT-OUT: (A.S.L.I.)

Automatic Safety Load Indicator shows continuously both the rated allowable load and the actual lifting status along the boom length and working radius. For a safe operation, a buzzer warns of the danger as soon as the crane operation reaches any overload condition and then the hydraulic power is cut off automatically in the event of dangerous excess. (optional)



WORKING RANGES



SUPERSTRUCTURE

CRANE PERFORMANCE

Boom length	11m ~ 35m
(Full power 4 section):	
Fly jib length:	8.5m ~ 13.5m
Boom derricking angle:	-2.5° ~ 80°
Boom telescoping speed	
Extension:	0.16m/sec.
Hoist and lower rope speed	
Main winch:	High-91.5m/min. (Mean) Low-41.7m/min. (Mean)
Auxiliary winch:	High-91.5m/min. (Mean) Low-41.7m/min. (Mean)
Hoist and lower hook speed	
Main winch:	High-9.15m/min. (Mean) Low-4.17m/min. (Mean)
Auxiliary winch:	High-91.5m/min. (Mean) Low-41.7m/min. (Mean)
Slewing speed:	1.64 rpm.

WIRE ROPE FOR HOISTING

Main winch	Type:	6 x Fi (29) I.W.R.C.
	Parts of line:	10
	Length:	160m x 18mm dia.
Auxiliary winch	Type:	6 x Fi (29) I.W.R.C.
	Parts of line:	1
	Length:	110m x 18mm dia.

HYDRAULIC SYSTEM

Oil pump:	3 section gear type
Hoist motor:	Radial piston type
Slewing motor:	Radial piston type
Control valve	3 position 4 way double-acting type with integral check, and relief valves.
Cylinder:	Double acting type with safety check valve or balancing valve.

